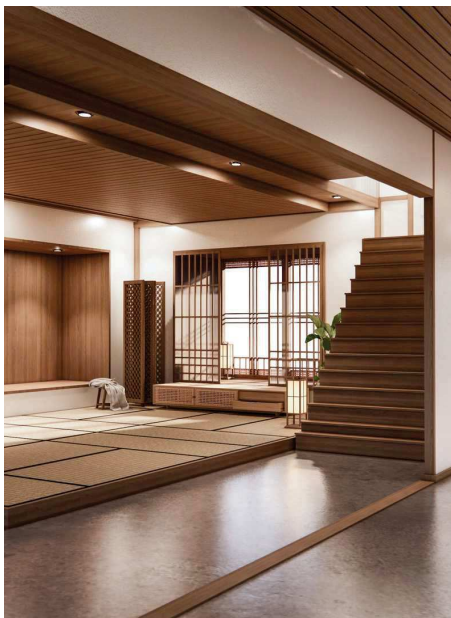


Artistry in Steel: realcolor® as Decorative Panels

The pursuit of innovation and creativity often leads to surprising new materials and techniques. One such material that has been making waves in contemporary design circles is realcolor®, the pre-painted galvanised steel, specifically when used as decorative panels. This versatile material not only offers practical advantages but also opens up a realm of artistic possibilities.



A Canvas of Possibilities

Imagine walking into a modern living space where the walls are adorned with sleek, seamless panels that exude a captivating vibrancy. These aren't your traditional wood or plaster walls; they are crafted from pre-painted galvanised steel. Typically used in industrial and construction applications, this material takes on a new identity when transformed into decorative panels.

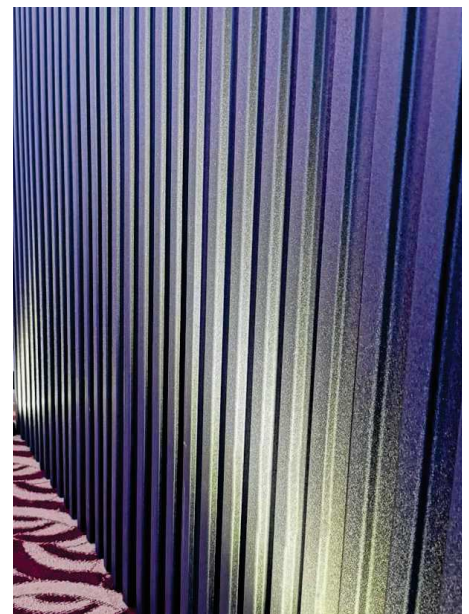
The appeal of realcolor® lies in its remarkable ability to mimic the textures of wood, using advanced painting techniques. realcolor® can emulate these textures flawlessly, whether you prefer the rich, darker tones of natural wood to evoke warmth or the lighter tones for a serene and calming atmosphere.

The Art of Adaptability or Eco-Friendly Elegance, or both

What makes realcolor® such a compelling choice for designers and architects is its adaptability. It can be customized to fit any aesthetic, from minimalist chic to industrial glam. There are available in a spectrum of colours, finishes, and textures, allowing for endless creative expression. realcolor® are highly durable and resistant to wear and tear. This durability ensures that your artistic vision remains pristine for years to come. In an era where sustainability is

paramount, realcolor® emerges as a responsible choice. This material is recyclable and reducing its environmental footprint. Therefore, you are not only enhance your space aesthetically but also contribute to a greener future.

realcolor® is redefining interior design, offering a blend of functionality and aesthetics. Not only elevates spaces but also inspires new realms of artistic expression. Consider the allure of realcolor® for your next design project, and watch as it transforms your vision into a breath-taking reality.





CSC STEEL

realcolor®



STEEL THAT SHINES, COLORS THAT LAST

Discover Unmatched Corrosion Resistance
and Color Retention with Us!



cscmalaysia.com