



Jimah Power Plant, Port Dickson, Negeri Sembilan.

Supreme realcolor®

Supreme Survivor Amongst the Polluted Areas

The business owners in the industrial district were always struggling with the high levels of corrosive particles in the air because of production operations and waste products. Due to the corrosive nature of such extreme circumstances, it caused serious damage to their roofing and cladding systems. Business owners are tormented by the cost of replacing roofing materials and it was a constant battle to keep up with the repairs.

Additionally, one of the repercussions of air pollution is acid rain and it is widespread in industrial sectors. It happens when water in the atmosphere encounters pollution from factories, automobiles, or heating boilers. These emissions include nitrogen oxides, sulphur dioxide, and sulphur trioxide, all of which react with water to form acid rain that is highly corrosive in nature. Acid rain has the potential to damage building materials and structures, therefore this is a severe concern for premise owners.

Nothing is more crucial than a great roofing and cladding system when it comes to safeguarding your business from the weather, especially if you operate in highly corrosive and polluted locations. These systems provide crucial barriers against wind, rain, and hail, keeping your building secure and safe from the damaging effects of unfavourable weather conditions.



High Pollution Industrial Area.
(Source: Sykono via Canva.com)

Supreme
realcolor®



YOUR ULTIMATE SELECTION AGAINST WEATHERING

The ultimate roofing & cladding system with excellent outdoor durability, UV protection, formability & chemical resistance.



cscmalaysia.com



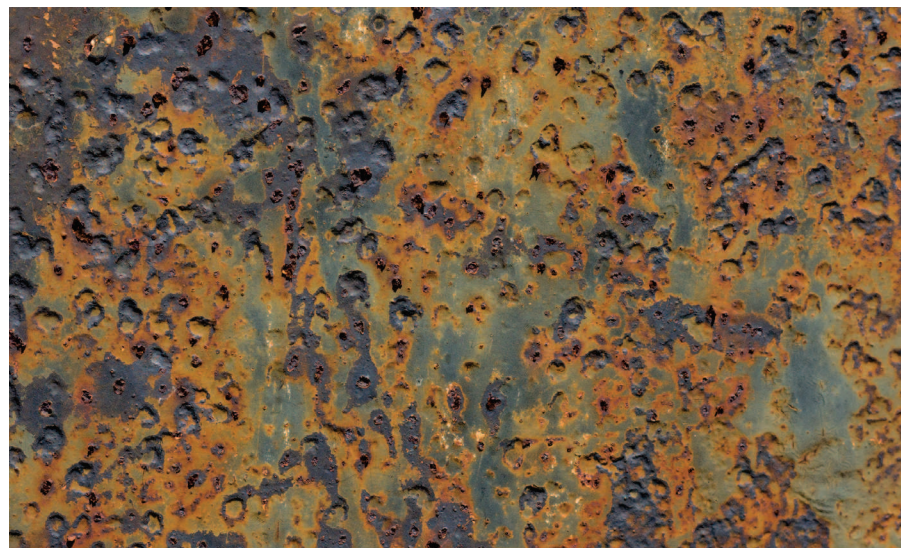
Yung Chi Paint Factory, Kawasan Perindustrian Bukit Rambai, Melaka.

A great roofing and cladding system is a crucial component of your toolset for ensuring that your business remains robust in the face of tough environmental conditions. As such, it needs to be made from materials that are durable and long-lasting. However, if the wrong roofing material is chosen, it can lead to a number of problems. For example, some materials are susceptible to corrosion, which can cause them to deteriorate quickly. In addition, some materials may not be able to withstand extreme weather conditions, resulting in damage. Thus, it is essential to carefully consider all of the options before choosing a roofing material.

“When it comes to roofing and cladding, you want a top-quality roof material that can withstand the toughest environments.”

Introducing realcolor® Supreme, a flagship pre-painted galvanized steel that is developed by CSC Steel (CSCM) which offers a unique combination of excellent outdoor durability, UV protection, formability, and even chemical resistance. Pre-painted Galvanized Steel (“PPGI”) is another form of coated steel that is commonly used in construction materials

“The top-liner of realcolor® Supreme comprises of Hynar/Kylar certified PVDF coating, known as the only C-5I (Industrial Grade) and C-5M (Marine Grade) roofing material certified by SIRIM under MS2383 in the market”



Acid Rain Effects on Steel Roofing.
(Source: James Conkis via Canva.com)

Corrosivity Category

C5(M)- Very High

Coastal and offshore areas with high salinity and exposed areas along the coastline
80 - 200 ($\mu\text{m}/\text{y}$)



C5(I)- Very High

Industrial area with high humidity and very high industrial pollution
80 - 200 ($\mu\text{m}/\text{y}$)



C4(T)- High or Tropical

Industrial areas and coastal areas with high pollution and moderate salinity
50 - 80 ($\mu\text{m}/\text{y}$)



C3- Medium

Urban areas and industrial atmosphere with moderate pollution. Coastal areas with low salinity
25 - 50 ($\mu\text{m}/\text{y}$)



C2- Low

Atmosphere with minimum pollution, (Rural areas)
1.3 - 25 ($\mu\text{m}/\text{y}$)



C1- Very Low

Dry zone with very low pollution
<1.3 ($\mu\text{m}/\text{y}$)



Sirim MS2383 table (Corrosivity rate).

(Source: ISO 9223 environmental corrosiveness guidance)

such as awnings, roofing, cladding, and wall panels. Moreover, realcolor® Supreme is so well-made that it offers a 30-year warranty against perforation and a 15-year warranty against colour fade. This is to demonstrate the faith in the superior product such as realcolor® Supreme.

With the above-mentioned properties of realcolor® Supreme, it is well suited for usage in industrial sectors that operate in corrosive environments on a regular basis.

realcolor® Supreme, with its genuine Polyvinylidene Fluoride (PVdF) coating, is ideal for outdoor applications that demand a high level of colour retention and durability. The PVdF-based coating is weather and chemical resistant, making it an excellent choice for applications requiring the highest level of finish. realcolor® Supreme can resist the toughest circumstances while maintaining

the external aesthetics' endurance. Consequently, the building's life expectancy will be extended, and maintenance and replacement expenditures will be reduced. Thus, realcolor® Supreme is a cost-effective and effective solution that has the potential to save corporate thousands of ringgits over time.

Furthermore, realcolor® Supreme offers exceptional colour retention properties, ensuring that the exterior colour remains brilliant for decades. Because the flagship pre-painted galvanized steel comprises >70% PVdF, it has exceptional corrosion resistance. SIRIM certification has recognised realcolor® Supreme as the first and only roofing metal sheet brand in the C-5(M) & C-5(I) categories. This classification indicates that it can endure extremely high humidity and aggressively polluted atmospheres. In

Addition, buildings near coastal and marine areas with high salinity can be protected by realcolor® Supreme due to its C-5(M) corrosivity rate achievement. Because of its C-5(I) corrosivity class, realcolor® Supreme can thrive in aggressive atmospheres and high humidity industrial areas, making it suitable for use in petrochemical plants and thermal power plants.

Due to high corrosion rates, industrial plants and premises are frequently plagued with the problem of repairing and replacing roofing materials. Because of its extended life and resilience in corrosive environments, switching to realcolor® Supreme might help decrease construction waste. As a result, realcolor® Supreme is environmentally responsible and, in the long term, promotes a healthier and safer workplace for your employees.

Many industrial enterprises have turned to realcolor® Supreme as a corrosive-resistant option. realcolor® Supreme has been used in a number of high-profile projects around Malaysia, such as IKEA stores, Sunway Big Box Retail Park, Jimah Power Plants, and even Tabung Haji Complex, to name a few. realcolor® Supreme was created to last a decade while still allowing vivid colours to blend in with the building's façade. realcolor® Supreme is evidently seen as the ultimate solution for business owners to fend against high corrosion situations because of the fantastic results that the product can deliver and promise.

Look no farther than realcolor® Supreme if you want to protect your property from the destructive effects of corrosion. The solution is particularly intended to keep surfaces looking new and clean in even the most demanding settings. Contact CSC Steel now to learn more about how it can assist you with protecting your valuable assets.

For more information about realcolor® Supreme, please scan this QR code and look us up today.

