

Test Report

No. CRSSA/15871/16
CRS Ref. CRSSA/16/1598/CSC

Date : 19/07/2016

Page: 1 of 5

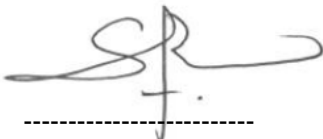
CSC STEEL SDN BHD
180, KAWASAN INDUSTRI AYER KEROH, AYER KEROH
75450 MELAKA, MALAYSIA

The following merchandise was (were) submitted and identified by the client as:

Sample Description : realcolor® Primero Eco
Sample Receiving Date : 13/07/2016
Testing Period : 13/07/2016 to 19/07/2016

Test Requested : Selected test(s) as requested by client
Test Method : Please refer to next page(s).
Test Results : Please refer to next page(s).
Analysts : Tan Mei Ann & Shirley Then

SGS (MALAYSIA) SDN. BHD.



TAY SIAM PINE
B.Sc.(HONS) MMIC
ASSISTANT LAB MANAGER

This document is issued by the Company subject to its General Conditions of Service printed overleaf, available on request or accessible at <http://www.sgs.com/en/Terms-and-Conditions.aspx> and, for electronic format documents, subject to Terms and Conditions for Electronic Documents at <http://www.sgs.com/en/Terms-and-Conditions/Terms-e-Document.aspx>. Attention is drawn to the limitation of liability, indemnification and jurisdiction issues defined therein. Any holder of this document is advised that information contained hereon reflects the Company's findings at the time of its intervention only and within the limits of Client's instructions, if any. The Company's sole responsibility is to its Client and this document does not exonerate parties to a transaction from exercising all their rights and obligations under the transaction documents. This document cannot be reproduced except in full, without prior written approval of the Company. Any unauthorized alteration, forgery or falsification of the content or appearance of this document is unlawful and offenders may be prosecuted to the fullest extent of the law. Unless otherwise stated the results shown in this test report refer only to the sample(s) tested and such sample(s) are retained for seven days (perishable food sample) or three months only.

Test Report

No. CRSSA/15871/16
CRS Ref. CRSSA/16/1598/CSC

Date : 19/07/2016

Page: 2 of 5

Test results:

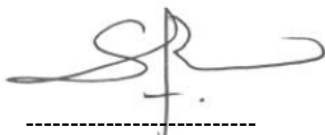
Test Part Description :

Sample Description : realcolor® Primero Eco

RoHS Directive 2011/65/EU Annex II

Test Item(s):	Unit	Test Method	Results	MDL	Limit
Cadmium (Cd)	mg/kg	With reference to IEC 62321-5:2013 (Determination of Cd by ICP-OES)	N.D.	2	100
Lead (Pb)	mg/kg	With reference to IEC 62321-5:2013 (Determination of Pb by ICP-OES)	N.D.	2	1000
Mercury (Hg)	mg/kg	With reference to IEC 62321-4:2013 (Determination of Hg by ICP-OES)	N.D.	2	1000
Hexavalent Chromium (CrVI)	mg/kg	With reference to JIS H 8625, and performed by UV-VIS Spectrophotometry	N.D.	2	1000
Sum of PBBs	mg/kg	With reference to IEC 62321-6:2015 (Determination of PBB by GC-MS)	N.D.	-	1000
Monobromobiphenyl	mg/kg	With reference to IEC 62321-6:2015 (Determination of PBB by GC-MS)	N.D.	5	-
Dibromobiphenyl	mg/kg	With reference to IEC 62321-6:2015 (Determination of PBB by GC-MS)	N.D.	5	-
Tribromobiphenyl	mg/kg	With reference to IEC 62321-6:2015 (Determination of PBB by GC-MS)	N.D.	5	-
Tetrabromobiphenyl	mg/kg	With reference to IEC 62321-6:2015 (Determination of PBB by GC-MS)	N.D.	5	-
Pentabromobiphenyl	mg/kg	With reference to IEC 62321-6:2015 (Determination of PBB by GC-MS)	N.D.	5	-
Hexabromobiphenyl	mg/kg	With reference to IEC 62321-6:2015 (Determination of PBB by GC-MS)	N.D.	5	-
Heptabromobiphenyl	mg/kg	With reference to IEC 62321-6:2015 (Determination of PBB by GC-MS)	N.D.	5	-
Octabromobiphenyl	mg/kg	With reference to IEC 62321-6:2015 (Determination of PBB by GC-MS)	N.D.	5	-
Nonabromobiphenyl	mg/kg	With reference to IEC 62321-6:2015 (Determination of PBB by GC-MS)	N.D.	5	-
Decabromobiphenyl	mg/kg	With reference to IEC 62321-6:2015 (Determination of PBB by GC-MS)	N.D.	5	-

SGS (MALAYSIA) SDN. BHD.



TAY SIAM PINE
B.Sc.(HONS) MMIC
ASSISTANT LAB MANAGER

This document is issued by the Company subject to its General Conditions of Service printed overleaf, available on request or accessible at <http://www.sgs.com/en/Terms-and-Conditions.aspx> and, for electronic format documents, subject to Terms and Conditions for Electronic Documents at <http://www.sgs.com/en/Terms-and-Conditions/Terms-e-Documents.aspx>. Attention is drawn to the limitation of liability, indemnification and jurisdiction issues defined therein. Any holder of this document is advised that information contained hereon reflects the Company's findings at the time of its intervention only and within the limits of Client's instructions, if any. The Company's sole responsibility is to its Client and this document does not exonerate parties to a transaction from exercising all their rights and obligations under the transaction documents. This document cannot be reproduced except in full, without prior written approval of the Company. Any unauthorized alteration, forgery or falsification of the content or appearance of this document is unlawful and offenders may be prosecuted to the fullest extent of the law. Unless otherwise stated the results shown in this test report refer only to the sample(s) tested and such sample(s) are retained for seven days (perishable food sample) or three months only.

Test Report

No. CRSSA/15871/16

Date : 19/07/2016

Page: 3 of 5

CRS Ref. CRSSA/16/1598/CSC

Sum of PBDEs	mg/kg	With reference to IEC 62321-6:2015 (Determination of PBDE by GC-MS)	N.D.	-	1000
Monobromodiphenyl ether	mg/kg	With reference to IEC 62321-6:2015 (Determination of PBDE by GC-MS)	N.D.	5	-
Dibromodiphenyl ether	mg/kg	With reference to IEC 62321-6:2015 (Determination of PBDE by GC-MS)	N.D.	5	-
Tribromodiphenyl ether	mg/kg	With reference to IEC 62321-6:2015 (Determination of PBDE by GC-MS)	N.D.	5	-
Tetrabromodiphenyl ether	mg/kg	With reference to IEC 62321-6:2015 (Determination of PBDE by GC-MS)	N.D.	5	-
Pentabromodiphenyl ether	mg/kg	With reference to IEC 62321-6:2015 (Determination of PBDE by GC-MS)	N.D.	5	-
Hexabromodiphenyl ether	mg/kg	With reference to IEC 62321-6:2015 (Determination of PBDE by GC-MS)	N.D.	5	-
Heptabromodiphenyl ether	mg/kg	With reference to IEC 62321-6:2015 (Determination of PBDE by GC-MS)	N.D.	5	-
Octabromodiphenyl ether	mg/kg	With reference to IEC 62321-6:2015 (Determination of PBDE by GC-MS)	N.D.	5	-
Nonabromodiphenyl ether	mg/kg	With reference to IEC 62321-6:2015 (Determination of PBDE by GC-MS)	N.D.	5	-
Decabromodiphenyl ether	mg/kg	With reference to IEC 62321-6:2015 (Determination of PBDE by GC-MS)	N.D.	5	-

- Note : (a) mg/kg = ppm ; (0.1wt% = 1000ppm)
 (b) N.D. = Not Detected
 (c) MDL = Method Detection Limit
 (d) - = Not regulated

SGS (MALAYSIA) SDN. BHD.



TAY SIAM PINE
 B.Sc.(HONS) MMIC
 ASSISTANT LAB MANAGER

This document is issued by the Company subject to its General Conditions of Service printed overleaf, available on request or accessible at <http://www.sgs.com/en/Terms-and-Conditions.aspx> and, for electronic format documents, subject to Terms and Conditions for Electronic Documents at <http://www.sgs.com/en/Terms-and-Conditions/Terms-e-Documents.aspx>. Attention is drawn to the limitation of liability, indemnification and jurisdiction issues defined therein. Any holder of this document is advised that information contained hereon reflects the Company's findings at the time of its intervention only and within the limits of Client's instructions, if any. The Company's sole responsibility is to its Client and this document does not exonerate parties to a transaction from exercising all their rights and obligations under the transaction documents. This document cannot be reproduced except in full, without prior written approval of the Company. Any unauthorized alteration, forgery or falsification of the content or appearance of this document is unlawful and offenders may be prosecuted to the fullest extent of the law. Unless otherwise stated the results shown in this test report refer only to the sample(s) tested and such sample(s) are retained for seven days (perishable food sample) or three months only.

Test Report

No. CRSSA/15871/16
CRS Ref. CRSSA/16/1598/CSC

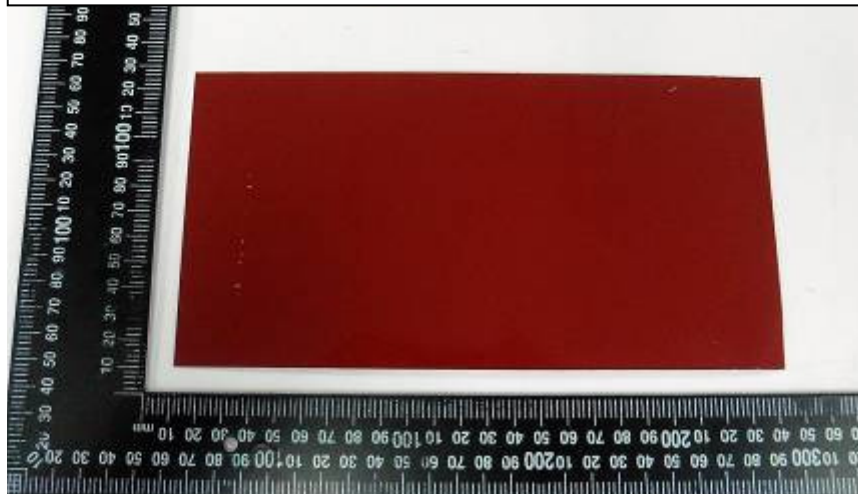
Date : 19/07/2016

Page: 4 of 5

Test Part Description :

Sample Description : realcolor® Primero Eco

CSC STEEL SDN BHD
CRSSA/15871/16

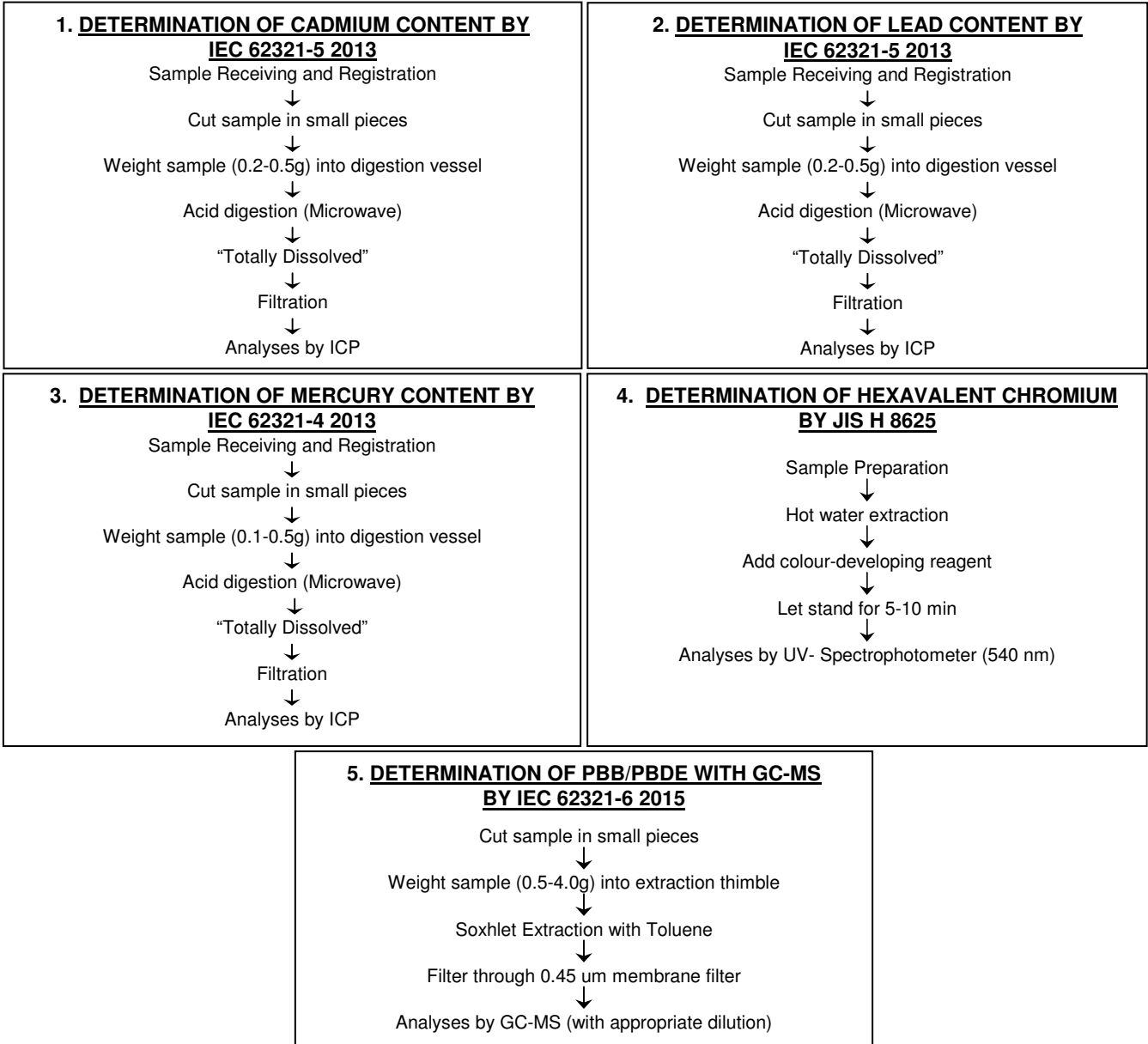


SGS authenticate the photo on original report only

SGS (MALAYSIA) SDN. BHD.


TAY SIAM PINE
B.Sc.(HONS) MMIC
ASSISTANT LAB MANAGER

This document is issued by the Company subject to its General Conditions of Service printed overleaf, available on request or accessible at <http://www.sgs.com/en/Terms-and-Conditions.aspx> and, for electronic format documents, subject to Terms and Conditions for Electronic Documents at <http://www.sgs.com/en/Terms-and-Conditions/Terms-e-Documents.aspx>. Attention is drawn to the limitation of liability, indemnification and jurisdiction issues defined therein. Any holder of this document is advised that information contained hereon reflects the Company's findings at the time of its intervention only and within the limits of Client's instructions, if any. The Company's sole responsibility is to its Client and this document does not exonerate parties to a transaction from exercising all their rights and obligations under the transaction documents. This document cannot be reproduced except in full, without prior written approval of the Company. Any unauthorized alteration, forgery or falsification of the content or appearance of this document is unlawful and offenders may be prosecuted to the fullest extent of the law. Unless otherwise stated the results shown in this test report refer only to the sample(s) tested and such sample(s) are retained for seven days (perishable food sample) or three months only.



**** End of Report ****

SGS (MALAYSIA) SDN. BHD.



TAY SIAM PINE
B.Sc.(HONS) MMIC
ASSISTANT LAB MANAGER

This document is issued by the Company subject to its General Conditions of Service printed overleaf, available on request or accessible at <http://www.sgs.com/en/Terms-and-Conditions.aspx> and, for electronic format documents, subject to Terms and Conditions for Electronic Documents at <http://www.sgs.com/en/Terms-and-Conditions/Terms-e-Documents.aspx>. Attention is drawn to the limitation of liability, indemnification and jurisdiction issues defined therein. Any holder of this document is advised that information contained hereon reflects the Company's findings at the time of its intervention only and within the limits of Client's instructions, if any. The Company's sole responsibility is to its Client and this document does not exonerate parties to a transaction from exercising all their rights and obligations under the transaction documents. This document cannot be reproduced except in full, without prior written approval of the Company. Any unauthorized alteration, forgery or falsification of the content or appearance of this document is unlawful and offenders may be prosecuted to the fullest extent of the law. Unless otherwise stated the results shown in this test report refer only to the sample(s) tested and such sample(s) are retained for seven days (perishable food sample) or three months only.