

CERTIFICATE OF ANALYSIS

CSC STEEL HOLDING BERHAD
180, Kawasan Industri Ayer Keroh,
Ayeh Keroh, 75450,
Melaka, Malaysia
Tel : 06-2310169
Attn : Mr Choong Chien Khay

Fax : 06-2315312


Certificate No : CN/ROHS0004/0713
Sample Log Code : ROHS0004/0713
Sample Received Date : 29-Jul-2013
Complete Analysis Date : 06-Aug-2013
Date Issue : 06-Aug-2013

Sample Description : Realcolor Supreme
Analysis results :

Parameter	Units	Analysis Result	Pre-Treatment Method	Determination Method
Cadmium	mg/kg	ND(<2)	IEC 62321 Ed.1.0 2008	IEC 62321 Ed.1.0 2008
Hexavalent Chromium	mg/kg	ND(<2)	IEC 62321 Ed.1.0 2008	IEC 62321 Ed.1.0 2008
Lead	mg/kg	ND(<2)	IEC 62321 Ed.1.0 2008	IEC 62321 Ed.1.0 2008
Mercury	mg/kg	ND(<2)	IEC 62321 Ed.1.0 2008	IEC 62321 Ed.1.0 2008
* Polybrominated Biphenyl (PBB)	mg/kg	ND(<20)	IEC 62321 Ed.1.0 2008	IEC 62321 Ed.1.0 2008
* Polybrominated Diphenyl Ether (PBDE)	mg/kg	ND(<20)	IEC 62321 Ed.1.0 2008	IEC 62321 Ed.1.0 2008

Remark : The result of analysis performed on the submitted sample comply with the EU ROHS Directive (2011/65/EU) with maximum allowable level of 1000ppm for lead, hexavalent chromium, mercury, polybrominated biphenyl, polybrominated diphenyl ether respectively and 100ppm for cadmium.




Teem Chin Mean
Manager
M.Sc., AMIC,
A/2152/4620/04

CERTIFICATE OF ANALYSIS

CSC STEEL HOLDING BERHAD

Certificate No

: CN/ROHS0004/0713



Photo of sample

Page 2/5

Symbol ** denotes parameter which is not included within the scope of accreditation **ND** denotes not detected

(< **Numeric number**) denotes detection limits

This report is provided solely for informational purposes and is not to be construed as providing legal advice, recommendations or warranties of any kind whatsoever. This report shall not be reproduced except in full, without written approval of the laboratory. The result expressed herein do not necessarily reflect the opinion or position of ACUMEN SCIENTIFIC SDN. BHD.. Besides that, opinions and interpretations expressed herein are outside the scope of SAMM accreditation. This certificate of analysis is issued by the company subject to the terms and conditions of service which available and accessible at www.acumen.com.my.

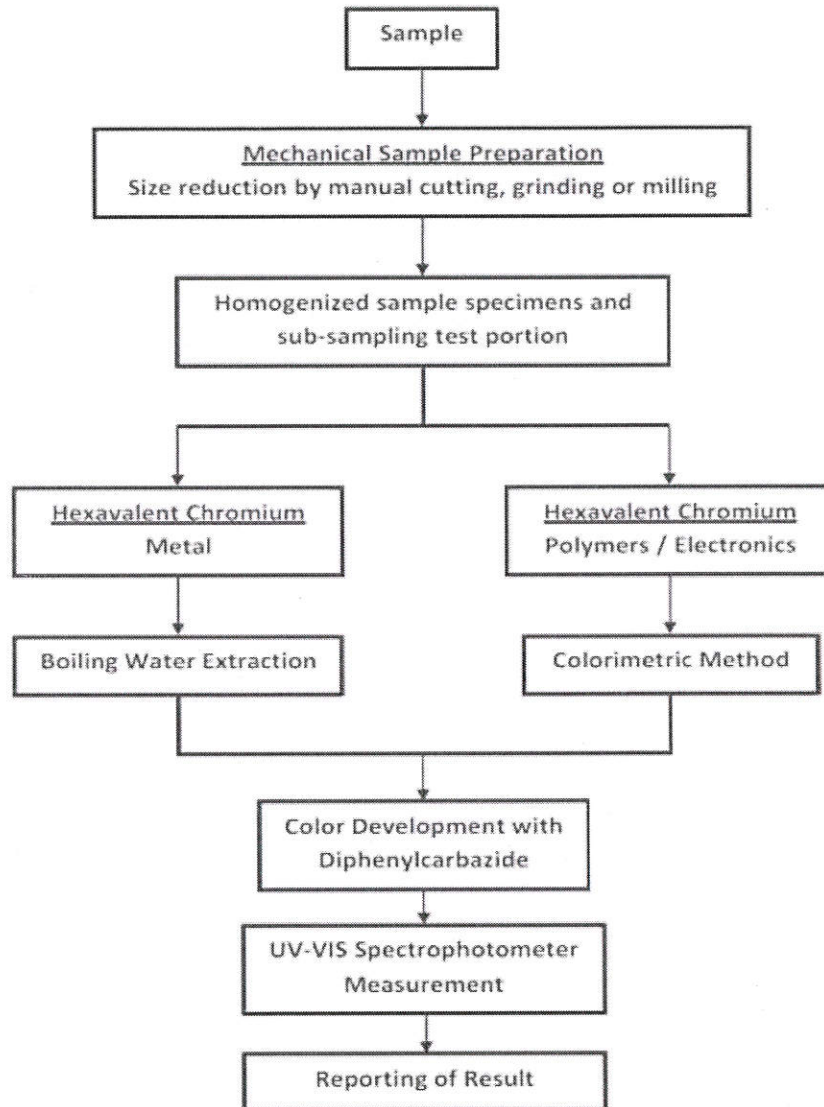
CERTIFICATE OF ANALYSIS

CSC STEEL HOLDING BERHAD

Certificate No

: CN/ROHS0004/0713

Flow Chart for Analysis of Hexavalent Chromium in Method IEC 62321



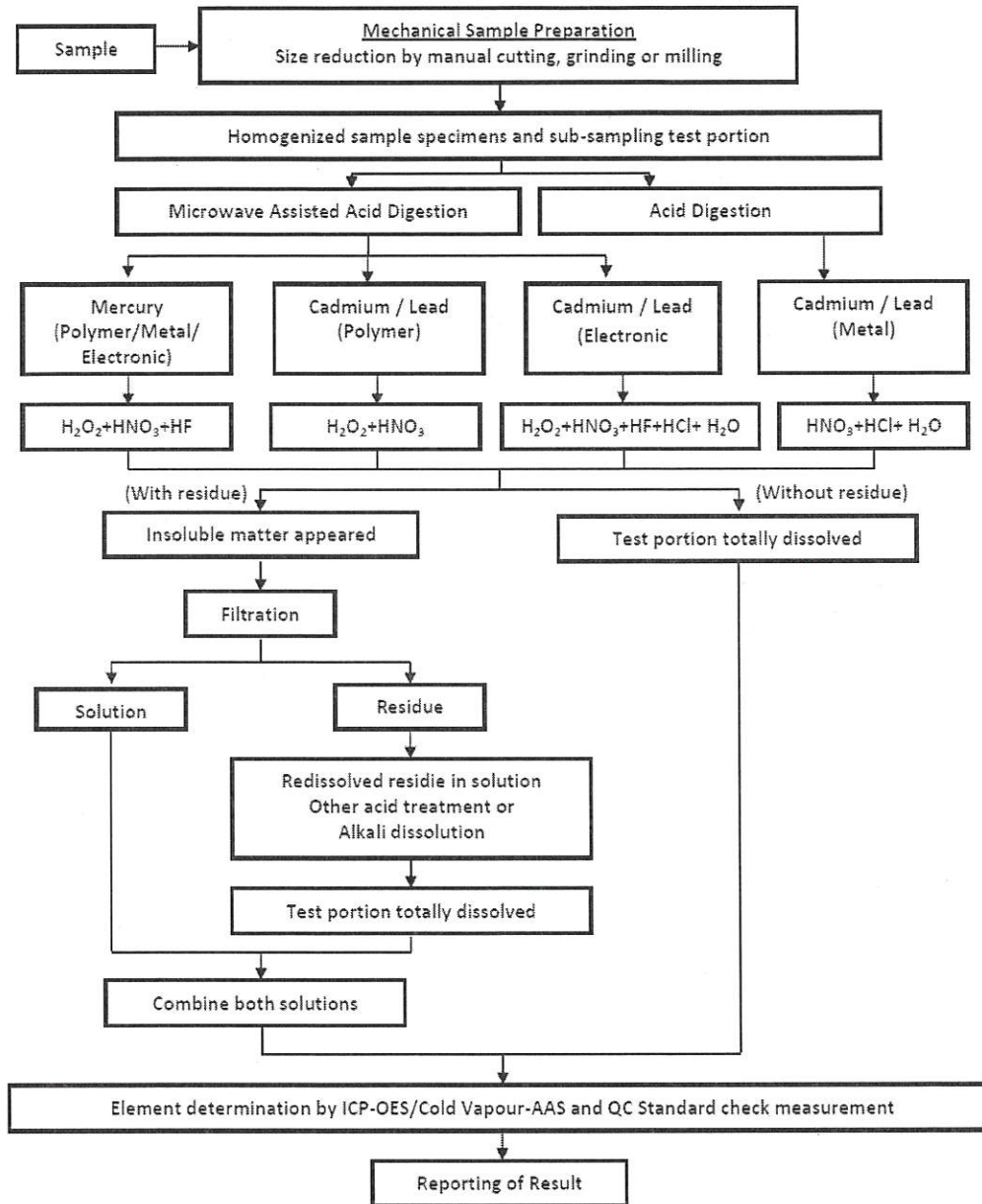
CERTIFICATE OF ANALYSIS

CSC STEEL HOLDING BERHAD

Certificate No

: CN/ROHS0004/0713

Flow Chart for Analysis of Hg, Cd and Pb in Method IEC 62321



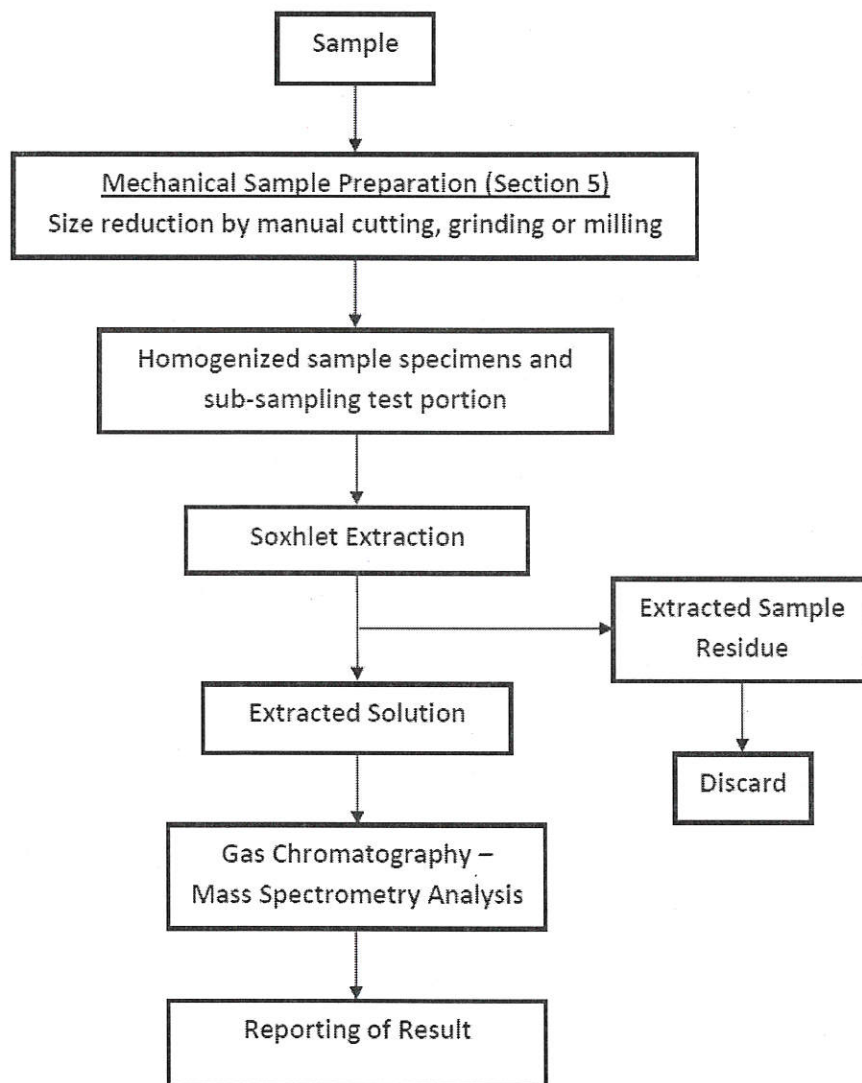
CERTIFICATE OF ANALYSIS

CSC STEEL HOLDING BERHAD

Certificate No

: CN/ROHS0004/0713

Flow Chart for Analysis of PBB and PBDE in Method IEC 62321



Page 5/5

Symbol "" denotes parameter which is not included within the scope of accreditation ND denotes not detected

(< Numeric number) denotes detection limits

This report is provided solely for informational purposes and is not to be construed as providing legal advice, recommendations or warranties of any kind whatsoever. This report shall not be reproduced except in full, without written approval of the laboratory. The result expressed herein do not necessarily reflect the opinion or position of ACUMEN SCIENTIFIC SDN. BHD.. Besides that, opinions and interpretations expressed herein are outside the scope of SAMM accreditation. This certificate of analysis is issued by the company subject to the terms and conditions of service which available and accessible at www.acumen.com.my.